

MEGA GUARD-LIGHT GRAY (16.8" HEIGHT)

WHEN NEEDED

POLYMER MATERIAL.

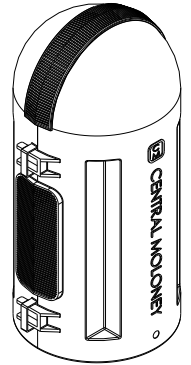
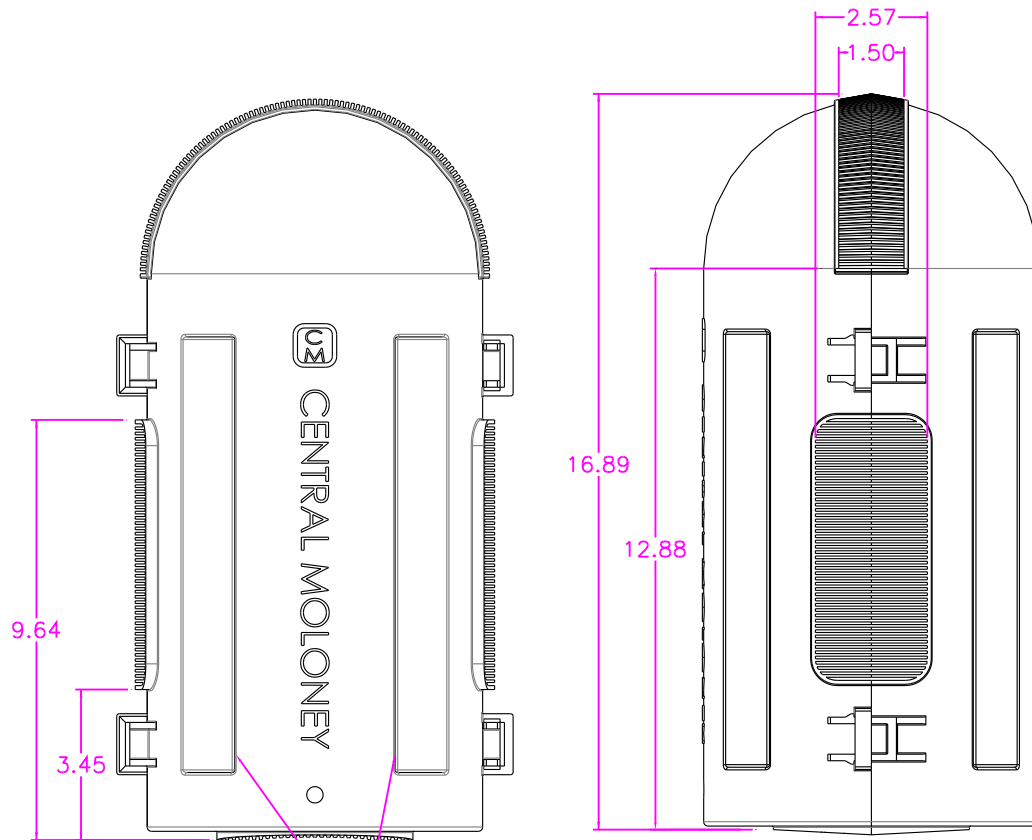
- LARGE PORTS ON SIDES AND TOP TO ACCOMMODATE A VARIETY OF CONDUCTOR CONFIGURATIONS
- FLEXIBLE FINGERS AT THE CABLE ENTRANCES PERMIT EASY INSTALLATION.

INSTALLATION INSTRUCTIONS

- CM "MEGA" GUARDS ARE DESIGNED FOR INSTALLATION ON DISTRIBUTION CLASS HV BUSHINGS AND ARRESTERS, UP TO 35 KV CLASS (21.1 KV LINE TO GROUND). THE GUARD IS TO BE INSTALLED ONLY OVER THE TOP SHED OF THE INSULATOR
- WITH GUARD HALVES IN HAND, THE GUARD IS INSTALLED AROUND THE INSULATOR AND IS SQUEEZED SHUT UNTIL THE LATCHES ENGAGE. NORMAL INSTALLATION IS ON DEENERGIZED EQUIPMENT, BUT GUARDS CAN BE INSTALLED ON ENERGIZED EQUIPMENT USING PROPER LIVE LINE HANDLING EQUIPMENT AND PROCEDURES
- INSTALLATION NOTE ALSO INCLUDED ON INSIDE OF GUARD

MATERIAL PROPERTIES

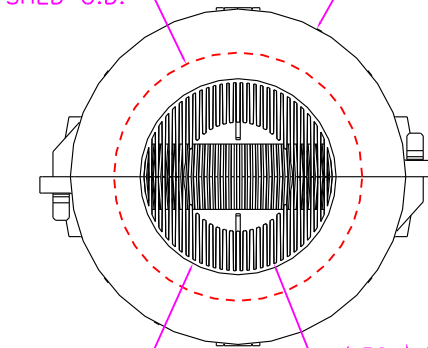
- UV STABILIZED
- DIELECTRIC STRENGTH-22KV/MM
- MINIMUM INSTALLATION TEMP (-25°C)



GRIPPING CUTOUTS TO EASE INSTALLATION

5.70" MAXIMUM SHED O.D.

7.70" DIA. OUTSIDE



4.50 DIA.

4.32 MAXIMUM THROAT DIA.