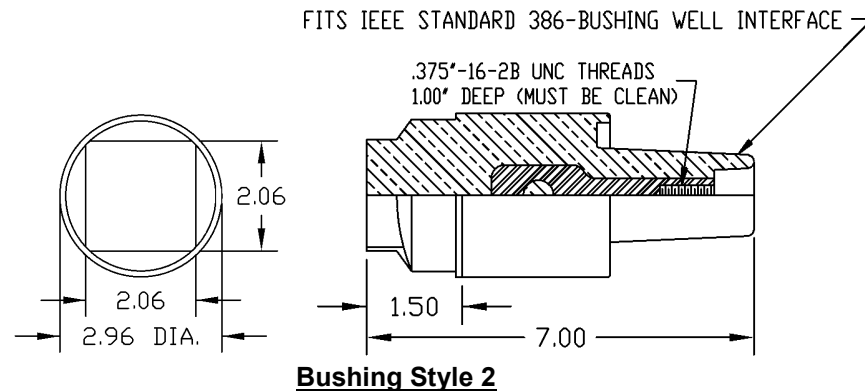
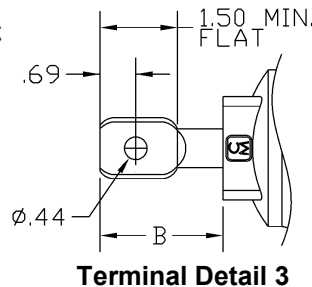
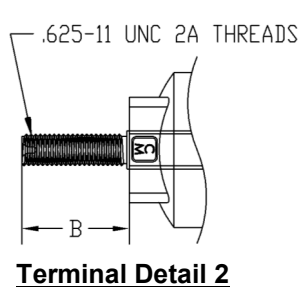
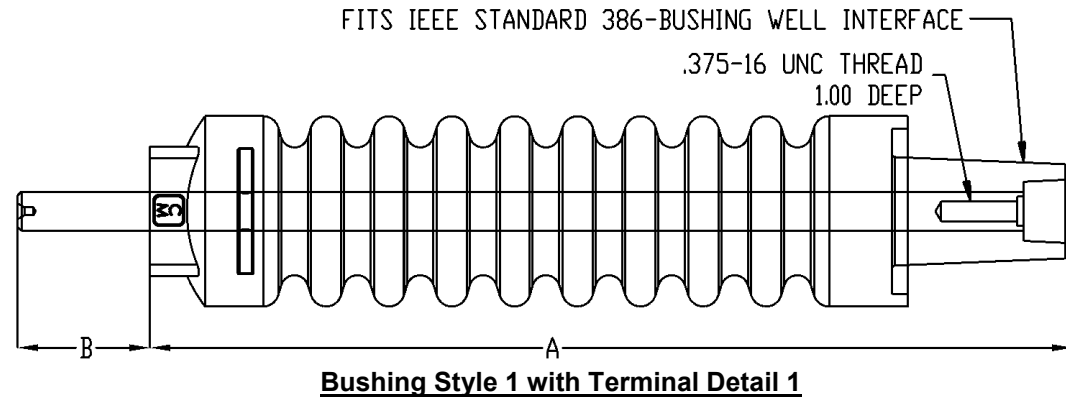
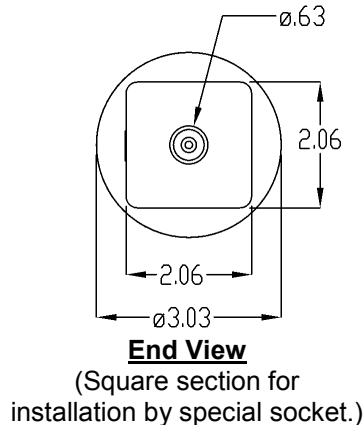




- Elastomeric test bushings designed for indoor production line testing only, no outdoor or permanent installation.
- Not suitable for partial discharge (corona) testing.
- Bushing must be kept clean to prevent interface and surface flashover.
- Use silicone dielectric grease on interface.
Installation torque 180 in.-lbs. max..

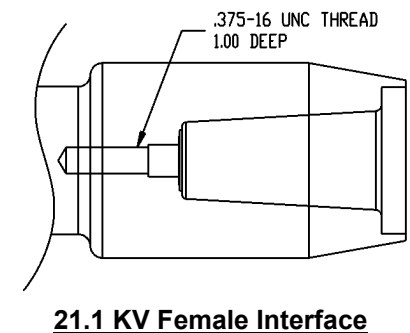
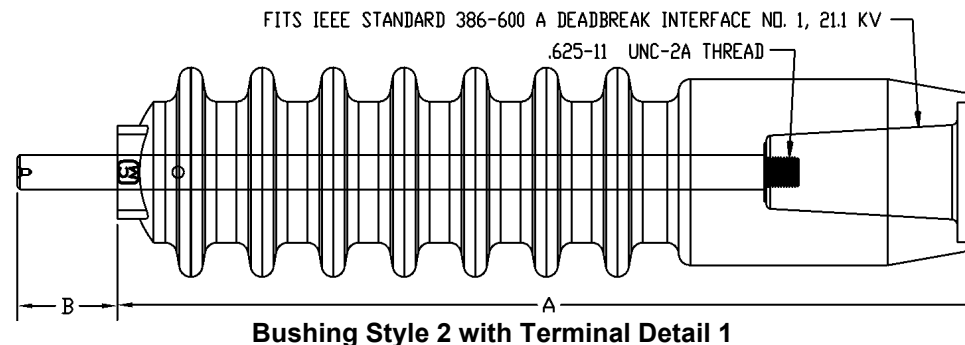
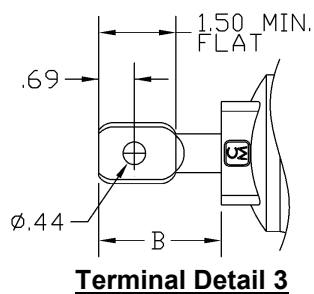
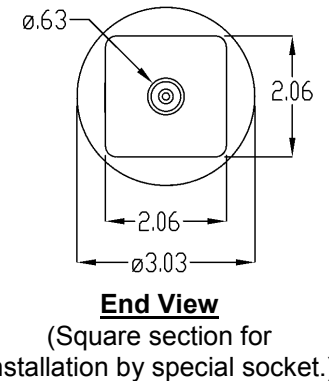
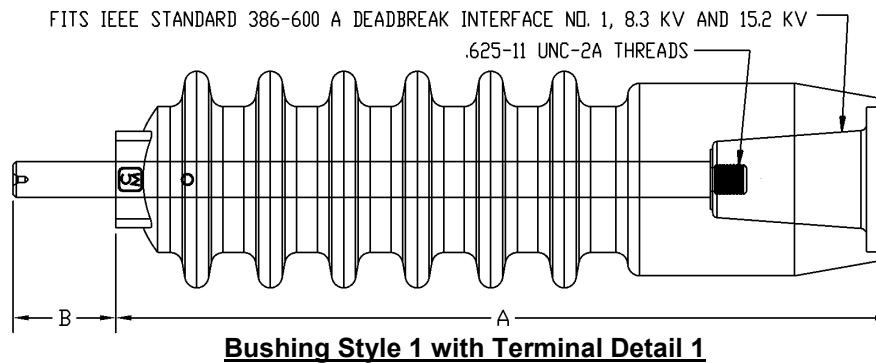
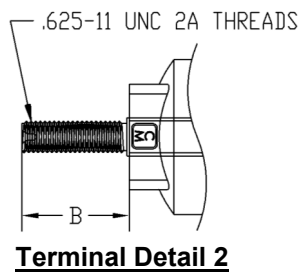
Part Number	Bushing Style	Terminal Detail	Conductor Material	"A" Dimension	"B" Dimension	Impulse (KV)	AC (60 Hz)
70371270	1	1	Steel	14.75	2.00	150	50
70371272	1	2	Copper	14.75	2.00	150	50
70371273	1	3	Copper	14.75	2.19	150	50
70371254	2	N/A	Steel	7.00	N/A	150	50



NOTE: DIMENSIONS GIVEN ARE IN INCHES AND ARE FOR REFERENCE ONLY.

Part Number	Bushing Style	Terminal Detail	Conductor Material	"A" Dimension	"B" Dimension	Impulse (KV)	AC (60 Hz)	ANSI 386 Interface (KV)
70372255	1	1	Copper	16.13	2.13	125	40	8.3 & 15.2
70372257	1	3	Copper	16.13	2.38	125	40	8.3 & 15.2
70372260	1	3	Steel	16.13	2.38	125	40	8.3 & 15.2
70372256	2	1	Copper	18.59	2.15	150	50	21.1 (Male)
70372272	2	1	Steel	18.59	2.15	150	50	21.1 (Male)
70372275	2	1	Steel	18.59	2.15	150	50	21.1 (Female)
70372274	2	2	Copper	18.59	1.75	150	50	21.1 (Male)
70372258	2	3	Copper	18.59	2.38	150	50	21.1 (Male)
70372273	2	3	Steel	18.59	2.38	150	50	21.1 (Male)
70372276	2	3	Steel	18.59	2.38	150	50	21.1 (Female)

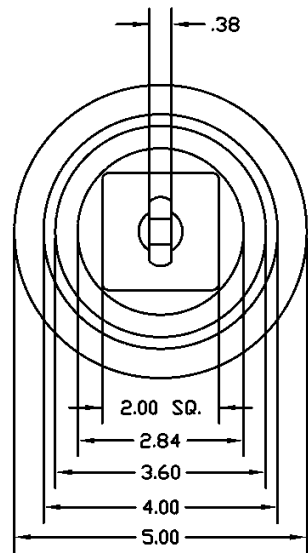
- Elastomeric test bushings designed for indoor production line testing only, no outdoor or permanent installation.
- Not suitable for partial discharge (corona) testing.
- Bushing must be kept clean to prevent interface and surface flashover.
- Use silicone dielectric grease on interface. Installation torque 180 in.-lbs. max..



NOTE: DIMENSIONS GIVEN ARE IN INCHES AND ARE FOR REFERENCE ONLY.

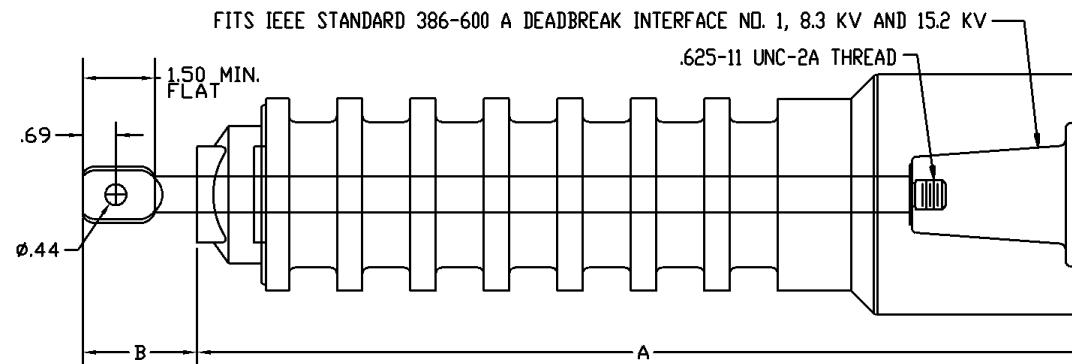
- Elastomeric test bushings designed for indoor production line testing only, no outdoor or permanent installation.
- Not suitable for partial discharge (corona) testing.
- Bushing must be kept clean to prevent interface and surface flashover.
- Use silicone dielectric grease on interface. Installation torque 180 in.-lbs. max..

Part Number	Bushing Style	Terminal Detail	Conductor Material	"A" Dimension	"B" Dimension	Impulse (KV)	AC (60 Hz)	ANSI 386 Interface (KV)
70372293	1	3	Copper	18.59	2.38	200	50	15.2 (Male)
70372297	1	3	Steel	18.59	2.38	200	50	15.2 (Female)

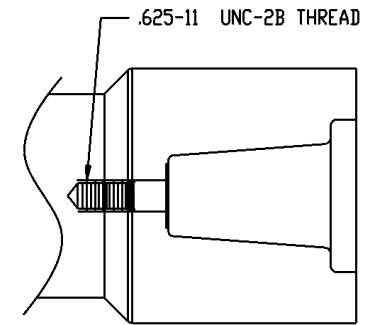


End View

(Square section for installation by special socket.)



Bushing Style 1 with Terminal Detail 3



**8.3 & 15.2 KV
Female Interface**

NOTE: DIMENSIONS GIVEN ARE IN INCHES AND ARE FOR REFERENCE ONLY.