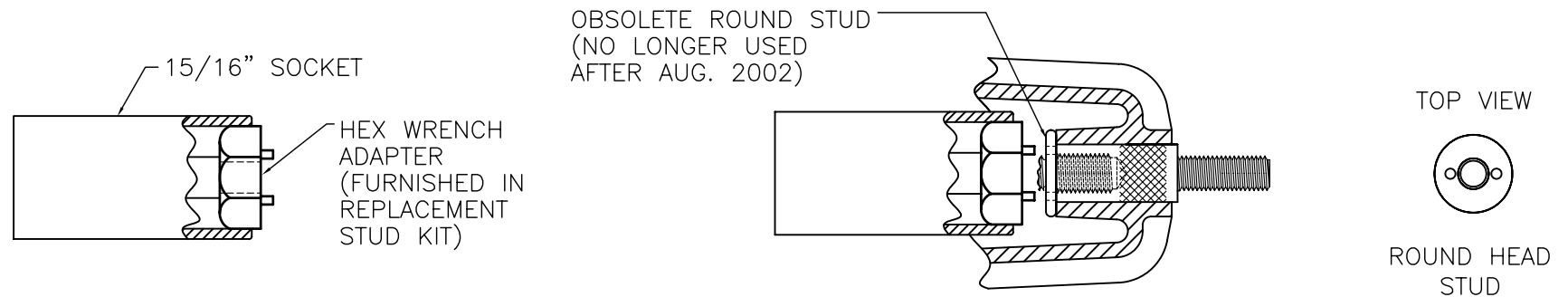


# -REPLACEMENT INSTRUCTIONS- CENTRAL MOLONEY BUSHING WELL HEX REMOVABLE STUD

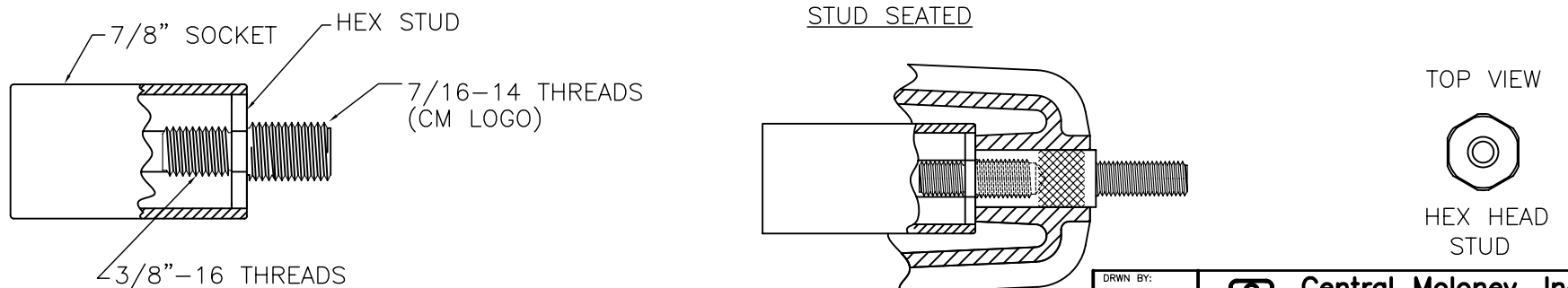
## STUD REPLACEMENT INSTRUCTIONS

1. REMOVE BROKEN STUD BY TURNING COUNTER CLOCKWISE:
  - A. IF EXISTING STUD IS ROUND (SEE FIGURE 1), USE ADAPTER PROVIDED IN KIT AND REMOVE BROKEN STUD BY TURNING COUNTER CLOCKWISE WITH A 15/16" SOCKET.
  - B. IF EXISTING STUD IS HEX TYPE (SEE FIGURE 2) USE A 7/8" SOCKET (6 POINT RECOMMENDED).
2. INSTALL NEW STUD BY PLACING THE LARGE (LOGO) END INTO THE FEMALE THREADS IN THE BUSHING WELL. (SEE FIGURE 2)
3. TIGHTEN TO 20-22 FT./LBS. USING A 7/8" SOCKET. (6 POINT RECOMMENDED)
4. ORDERING INFORMATION - HEX STYLE REMOVABLE STUD KIT FOR ALL CMI BUSHING WELLS - PART NUMBER 70190051

**FIG. 1**



**FIG. 2**



DESCRIPTION

INSTRUCTIONS FOR REPLACING REMOVABLE STUDS IN 200 AMP BUSHING WELLS ( P/N 70190000)

DRWN BY:

B.M.

DATE

7/17/02



**Central Moloney, Inc.**  
**Components Operation**

5500 Jefferson Parkway-Phone (870) 247-5320-Pine Bluff, Arkansas 71602

NO.

CDS 19 102

REV.

3

REV. DATE

8/14/02